



ANTIOCH UNIVERSITY
**Office of Institutional
Effectiveness**

2020 ANTIOCH UNIVERSITY FACT BOOK

Prepared by:

The University Office of Institutional Effectiveness

Teresa Kaldor, PhD

Director

Cynthia Cain Fitzgerald

Associate Director

Jessica Grater

Institutional Research Analyst

PREFACE

The Office of Institutional Effectiveness (OIE) proudly presents the 2020 Antioch University Fact Book, the third edition under our watch.

The OIE presents to the Antioch community, and the public, the following new sections in the 2020 edition:

- (1) Streamlined admissions and enrollment data – following students from submitted applications all the way to registration
- (2) Degrees Conferred – by location and academic program
- (3) Retention and Graduation Rates – by race, gender and age

As always, we thank everyone who have helped us validate the data. We are grateful to the following departments: Enrollment Operations, the Registrar’s Office, Finance and Financial Aid.

We look forward to creating more content for the Fact Book in the coming year.

The Office of Institutional Effectiveness

1	RECRUITMENT AND ADMISSIONS	3
2	ENROLLMENT DATA BY CAMPUS.....	4
2.1	FALL ENROLLMENT DATA	4
2.2	ANNUAL ENROLLMENT DATA.....	7
3	ENROLLMENT DATA BY PROGRAM.....	8
4	STUDENT DEMOGRAPHICS	13
5	DEGREES CONFERRED	16
6	RETENTION AND GRADUATION RATES.....	21
6.1	UNDERGRADUATE DEGREE PROGRAM OUTCOMES.....	21
6.2	MASTER’S DEGREE PROGRAM OUTCOMES	22
6.3	DOCTORAL DEGREE PROGRAM OUTCOMES.....	23
6.4	OUTCOMES BY ACADEMIC LEVEL	24
6.5	OUTCOMES BY ACADEMIC LEVEL BY RACE.....	26
6.6	OUTCOMES BY ACADEMIC LEVEL BY GENDER.....	29
6.7	OUTCOMES BY ACADEMIC LEVEL BY AGE	32
7	FACULTY AND STAFF.....	35
7.1	FACULTY HEADCOUNT	36
7.2	FACULTY DEMOGRAPHICS	37
7.3	STAFF HEADCOUNT	39
7.4	STAFF DEMOGRAPHICS	40
8	FINANCIAL AID	43
9	FINANCE.....	48
10	DEVELOPMENT.....	49

1 Recruitment and Admissions

DEFINITIONS

(Students applying for non-matriculated programs are excluded.)

APPLICANTS: Number of applications received by academic year.

ACCEPTED: Number of applications that were accepted for admission by academic year. Because the term that this occurs may or not be the same term that the student enrolls, this number can be lower than the number of new registered students.

NEW STUDENTS: Number of students enrolled in the first term by academic year.

Admissions Pipeline, by Academic Year

	Academic Year	Applicants	Accepted	New Students
GSLC	2016	57	36	41
	2017	53	31	37
	2018	48	28	33
	2019	63	27	29
Los Angeles	2016	1027	793	545
	2017	871	595	533
	2018	754	489	418
	2019	725	457	475
Midwest	2016	193	139	86
	2017	153	122	97
	2018	182	113	53
	2019	48	22	12
New England	2016	536	328	312
	2017	520	312	274
	2018	517	310	315
	2019	601	362	322
Online	2016	82	65	56
	2017	72	44	27
	2018	359	236	150
	2019	258	176	139
Santa Barbara	2016	326	230	208
	2017	323	231	182
	2018	304	209	182
	2019	283	180	155
Seattle	2016	409	244	238
	2017	476	278	258
	2018	620	320	286
	2019	702	323	306

2 Enrollment Data by Campus

2.1 Fall Enrollment Data

DEFINITIONS

FALL TERM: All students who were enrolled during the fall semester or quarter. This includes terms that span two seasons, summer/fall and fall/winter.

HEADCOUNT: Students who are actively working on a degree, certificate or external credential in a program. Headcount is unduplicated by campus. If a student was enrolled at more than one campus in the same academic year, they are counted under both locations. Headcount is also unduplicated by academic level. If a student was enrolled as both an undergraduate and a graduate student in the same academic year, they are counted under both levels.

TERM FTE (full-time equivalent): Undergraduate students are considered Full-Time Equivalent (FTE) if they had 12 or more quarter/semester hours in the term; similarly, graduate students were considered full-time if they attempted 6 or more credit hours. FTE was calculated by dividing the total number of credit hours by 12 (UG) or 6 (GR), following the calculations discussed in the paper “2015-05-20 Rationale and Methodology for Antioch FTE Calculations”. Therefore it is possible for a student to represent more than 1 FTE.

UNIVERSITY TOTAL: Headcount is unduplicated, this is not a sum of the campuses, but rather a true unduplicated headcount of students.

CAMPUS TOTAL: Headcount is unduplicated, this is not a sum of the academic levels within a campus, but rather a true unduplicated headcount of students.

Unduplicated headcount (FALL)

		Fall 2015	Fall 2016	Fall 2017	Fall 2018	Fall 2019
University Total	BA	643	644	544	475	477
	MA	1843	1882	1987	2043	2012
	DOC	541	558	543	559	537
	Total	3026	3084	3074	3077	3024
GSLC	DOC	148	162	158	168	161
	Total	148	162	158	168	161
Los Angeles	BA	163	196	194	130	139
	MA	615	657	718	736	717
	Total	778	853	912	866	856
Midwest	BA	51	39	41	39	2
	MA	128	120	95	78	12
	Total	179	159	136	117	14
New England	MA	469	536	556	548	569
	DOC	223	227	231	235	231
	Total	691	763	787	783	800
Online	BA	157	165	106	137	177
	MA				8	18
	Total	157	165	106	145	195
Santa Barbara	BA	167	140	115	87	74
	MA	183	156	185	210	202
	DOC	69	64	66	65	60
	Total	419	360	366	362	335
Seattle	BA	105	104	88	82	85
	MA	448	413	433	463	494
	DOC	101	105	88	91	85
	Total	654	622	609	636	663

Notes: Data are as of August 2020. Includes the following completion types: degree, certificate, and external credential.

Fall FTE

		Fall 2015	Fall 2016	Fall 2017	Fall 2018	Fall 2019
University Total	BA	503	495	425	337	336
	MA	2535	2503	2674	2753	2634
	DOC	689	766	739	769	721
	Total	3727	3765	3838	3860	3691
GSLC	DOC	148	162	158	168	161
	Total	148	162	158	168	161
Los Angeles	BA	140	156	166	100	110
	MA	971	1047	1128	1125	1117
	Total	1111	1202	1294	1224	1227
Midwest	BA	37	30	32	31	1
	MA	153	133	110	97	9
	Total	190	163	142	128	10
New England	MA	590	632	630	617	597
	DOC	339	368	358	358	346
	Total	929	999	987	975	943
Online	BA	109	113	72	94	121
	MA				6	17
	Total	109	113	72	100	138
Santa Barbara	BA	158	133	103	68	56
	MA	320	253	327	371	364
	DOC	92	99	103	121	92
	Total	570	485	533	560	512
Seattle	BA	59	63	52	44	48
	MA	502	439	479	538	531
	DOC	110	137	121	123	122
	Total	671	640	653	704	701

Notes: Data are as of August 2020. Includes the following completion types: degree, certificate, and external credential.

2.2 Annual Enrollment Data

DEFINITIONS

HEADCOUNT: Students who are actively working on a degree or certificate in a program. Headcount is unduplicated by campus. If a student was enrolled at more than one campus in the same academic year, they are counted under both locations. Headcount is also unduplicated by academic level. If a student was enrolled as both an undergraduate and a graduate student in the same academic year, they are counted under both levels.

UNIVERSITY TOTAL: Headcount is unduplicated, this is not a sum of the campuses, but rather a true unduplicated headcount of students.

CAMPUS TOTAL: Headcount is unduplicated, this is not a sum of the academic levels within a campus, but rather a true unduplicated headcount of students.

Unduplicated Headcount (ANNUAL)

		AY2015-16	AY2016-17	AY2017-18	AY2018-19	AY2019-20
University Total	BA	889	901	810	744	728
	MA	2510	2575	2688	2759	2805
	DOC	596	600	600	616	595
	Total	3958	4037	4062	4104	4097
GSLC	DOC	159	170	175	181	180
	Total	159	170	175	181	180
Los Angeles	BA	251	291	308	200	195
	MA	871	907	995	982	1020
	Total	1105	1167	1275	1172	1204
Midwest	BA	67	56	55	53	11
	MA	193	188	149	122	54
	Total	259	239	203	173	64
New England	MA	613	688	733	756	753
	DOC	251	246	255	262	254
	Total	863	932	987	1017	1004
Online	BA	202	213	154	233	257
	MA				13	46
	Total	202	213	154	244	301
Santa Barbara	BA	221	209	160	130	109
	MA	256	249	258	276	287
	DOC	73	70	73	74	109
	Total	541	522	484	475	454
Seattle	BA	152	138	133	130	160
	MA	578	547	559	618	663
	DOC	113	114	97	99	95
	Total	837	795	784	842	913

Notes: Data are as of August 2020. Includes the following completion types: degree, certificate, and external credential.

3 Enrollment Data by Program

DEFINITIONS

HEADCOUNT (HC): Students who are actively working on a degree or certificate in a program. Headcount is unduplicated by program. If a student was enrolled in more than one program in the same academic year, they are counted under both.

FALL TERM: All students who were enrolled during the fall semester or quarter. This includes terms that span two seasons, summer/fall and fall/winter.

TERM FTE (full-time equivalent): Undergraduate students are considered Full-Time Equivalent (FTE) if they had 12 or more quarter/semester hours in the term; similarly, graduate students were considered full-time if they attempted 6 or more credit hours. FTE was calculated by dividing the total number of credit hours by 12 (UG) or 6 (GR), following the calculations discussed in the paper “2015-05-20 Rationale and Methodology for Antioch FTE Calculations”. Therefore it is possible for a student to represent more than 1 FTE.

Fall Enrollment by Program: Los Angeles

	Fall 2016		Fall 2017		Fall 2018		Fall 2019	
	HC	FTE	HC	FTE	HC	FTE	HC	FTE
BA in Applied Arts and Media	6	5	6	6	5	5	7	6
BA in Applied Studies	9	7	9	8	6	3	2	1
BA in Liberal Studies	158	122	136	101	113	88	125	102
BAA in Urban Communities and Justice	1	1	1	1	1	1		
BS in Applied Technology and Business Leadership	5	3	9	7	5	2	2	1
Certificate in Applied Community Psychology	3	3			1	1		
Certificate in Clear Credential - Education	28	12	28	15				
Certificate in LGBT Affirmative Psychology	1	2						
Certificate in Teaching Credential, Education	2	5	1	1				
Certificate in Urban Sustainability	1	2	1	2	1	0	1	0
Certificate in Web Development	17	17	33	43				
Induction Credential			13	4	44	18	46	17
MA in Clinical Psychology	396	618	460	729	496	782	497	812
MA in Education	12	14	20	29	16	17	13	17
MA in Education with Teaching Credential	32	67	30	65	31	50	25	49
MA in Nonprofit Management	34	45	25	33	24	32	14	17
MA in Psychological Studies			5	8	1	2		
MA in Psychology (Individualized)	9	11	5	5	11	10	6	6
MA in Urban Sustainability	20	30	19	27	17	24	19	24
MFA in Creative Writing	112	221	107	199	90	173	93	175
Post-MFA Certificate in the Teaching of Creative Writing	7	14	4	8	5	6		

Notes: Data are as of August 2020. Includes the following completion types: degree, certificate, and external credential.

Fall Enrollment by Program: Midwest

	Fall 2016		Fall 2017		Fall 2018		Fall 2019	
	HC	FTE	HC	FTE	HC	FTE	HC	FTE
BA in Early Childhood Education	8	8	12	12	8	9		
BA in Health and Wellness	4	2						
BA in Human Services Administration	8	5	8	5	8	4	1	0
BA in Humanities	3	3						
BA in Liberal Studies	6	3	10	6	9	7	1	0
BA in Management	9	9	6	4	3	2		
BS in Applied Technology and Business Leadership	1	1	3	3	7	6		
BS in Healthcare Administration			1	3	3	7		
Certificate in Dyslexia Studies	10	7	15	10	15	11	1	1
Certificate in Reggio Emilia Approach (REA)	6	4	5	4	2	2		
Certificate in Trauma Informed Education			1	0	2	3		
Early Childhood Generalist Endorsement			1	1	1	1		
MA in Conflict Analysis & Engagement	6	3	1	0			1	0
MA in Conflict Analysis & Resolution	3	2	3	2	1	1		
MA in Individualized Studies	20	14	10	7	5	5	1	1
MA in Individualized Studies: Creative Writing	5	3						
MA in Individualized Studies: Integrative Health Studies	1	1			1	1		
MA in Individualized Studies: Philosophy	3	2						
MA in Management and Change Leadership	17	10	13	7	6	3	2	2
Master of Business Administration					15	17	6	6
MEd in Education	11	17	8	11	8	9		
MEd in Education with Teaching Credential	33	64	32	61	16	33		
Ohio Principal License			2	3				
Teaching Endorsement	3	3	4	3	4	7		
Teaching Endorsement - 2nd License	2	3	1	1	2	3		

Notes: Data are as of August 2020. Includes the following completion types: degree, certificate, and external credential.

Fall Enrollment by Program: New England

	Fall 2016		Fall 2017		Fall 2018		Fall 2019	
	HC	FTE	HC	FTE	HC	FTE	HC	FTE
Certificate in Applied Behavior Analysis	20	15	3	2	2	2	1	1
Certificate in Climate Resilience					1	1	5	3
Certificate in Dance/Movement Therapy							6	5
Certificate in Digital Learning Specialist					1	1	1	1
Certificate in Dyslexia Studies							6	4
Certificate in Environmental and Sustainability Education	14	28	14	28	12	24	13	25
Certificate in Environmental Studies	11	19	27	38	24	26	16	15
Certificate in Library Media Specialist			1	1	1	0	2	1
Certificate in Mindfulness for Educators	4	2	4	3	2	2	4	2
Certificate in Nature Based Early Childhood Education	12	9	9	4	10	5	9	4
Certificate in Reggio Emilia Approach (REA)							3	3
Certificate in Sustainable Business	5	7	7	11	2	4		
Certificate in Trauma Informed Education							6	5
Certificate in Waldorf Education	17	17	28	20	25	24	10	7
Env't Studies: Resource Mgmt & Conservation - Int'l	1	1	1	1	1	1		
MA in Clinical Mental Health Counseling	144	169	182	217	216	237	234	241
MA in Dance Movement Therapy: Marriage and Family Therapy							7	15
MA in Dance/Movement Therapy and Counseling	27	47	26	39	23	37	15	23
MA in Interdisciplinary Studies	3	3	7	6	5	4	5	5
MA in Marriage and Family Therapy	12	22	20	35	17	29	20	28
MBA in Sustainability	11	20	2	3	2	4		
MEd for Experienced Educators	41	37	33	29	33	28	54	50
MEd for Integrated Day	1	2						
MEd for Integrated Learning	20	37	7	11				
MEd Foundations of Education: Integrated STEAM Education							2	2
MEd in Education with Teacher Certification			6	11	18	33	9	13
MEd in Waldorf Education	43	35	38	28	32	21	25	15
MS in Applied Behavior Analysis	28	19	38	27	23	21	13	12
MS in Environmental Studies	113	121	92	91	77	87	84	104
MS in Resource Management and Administration							1	2
MS in Resource Management and Conservation	4	4	3	3	6	7	5	6
PhD in Environmental Studies	69	60	74	63	73	57	71	53
PhD in Marriage and Family Therapy	20	32	22	29	28	37	34	46
Post-Master's Certificate in Clinical Mental Health Counseling	2	2	3	2	7	4	7	6
Post-Master's Cert in Counseling Military Personnel & Families	2	3	3	3	1	1	1	1
Post-Master's Cert in Respecialization in Marriage & Fam Therapy	1	1			4	6	2	2
Post-Master's Principal Cert in Ed Leadership & Admin			2	1	3	2	3	2
PsyD in Clinical Psychology	138	273	135	266	134	262	128	248

Notes: Data are as of August 2020. Includes the following completion types: degree, certificate, and external credential.

Fall Enrollment by Program: Online

	Fall 2016		Fall 2017		Fall 2018		Fall 2019	
	HC	FTE	HC	FTE	HC	FTE	HC	FTE
BA in Applied Studies	1	1			3	3	3	2
BA in Human Development	1	0	2	2	18	15	31	23
BA in Human Services Administration	51	37	21	11	18	10	21	14
BA in Humanities & Creative Writing	1	1	1	1				
BA in Liberal Studies	80	51	64	45	75	47	88	59
BA in Management	25	15	18	12	17	8	25	18
BA in Management-Data Analytics Focus	5	3						
BS in Applied Technology and Business Leadership	1	1			6	4	6	5
BS in Healthcare Administration							2	2
Master of Business Administration					1	2	1	2
Master of Human Services Administration					8	6	18	16

Notes: Data are as of August 2020. Includes the following completion types: degree, certificate, and external credential.

Fall Enrollment by Program: Santa Barbara

	Fall 2016		Fall 2017		Fall 2018		Fall 2019	
	HC	FTE	HC	FTE	HC	FTE	HC	FTE
BA in Applied Studies							1	1
BA in Liberal Studies	141	133	115	103	87	67	62	45
BA in Management							1	1
BA in Psychology							10	9
Certificate in Clear Credential - Education	6	2						
Certificate in Nature Based Early Childhood Education	2	1	4	3	3	1	1	0
Induction Credential			2	1	6	3	5	2
MA in Clinical Psychology	93	156	113	206	128	222	125	229
MA in Education	10	10	6	8	10	17	13	24
MA in Education with Teaching Credential	8	15	8	23	10	23	8	14
MA in Psychology (Non-Clinical)	8	13	8	10	2	3	2	4
Master of Business Administration	19	26	21	27	24	33	23	32
MEd in Education with Teaching Credential	10	30	7	15	9	31	9	35
MFA in Writing & Contemporary Media			16	30	18	36	14	25
PsyD in Clinical Psychology	64	99	66	103	65	121	60	92

Notes: Data are as of August 2020. Includes the following completion types: degree, certificate, and external credential.

Fall Enrollment by Program: Seattle

	Fall 2016		Fall 2017		Fall 2018		Fall 2019	
	HC	FTE	HC	FTE	HC	FTE	HC	FTE
BA in Health Counseling and Psychology	1	1	9	5	13	7	20	13
BA in Liberal Studies	97	59	76	44	45	24	42	26
Certificate in Culturally Responsive Early Childhood Education					24	12	20	10
Certificate in Sex Therapy	1	1	2	3	2	3	34	39
Certificate in Sexuality Education							4	5
Da Vinci High Program	6	3	3	2				
English Language Learner Endorsement							4	2
Library Media (Pathway 3)	7	4	5	3				
MA in Clinical Mental Health Counseling	112	114	121	117	126	126	127	129
MA in Clinical Mental Health Counseling with Art Therapy	58	59	51	52	50	52	49	49
MA in Clinical Mental Health Counseling with Drama Therapy	12	13	13	14	13	16	19	23
MA in Communication	1	1						
MA in Couple and Family Therapy	92	93	121	122	135	149	125	122
MA in Couple and Family Therapy with Art Therapy	18	20	24	28	24	27	26	24
MA in Couple and Family Therapy with Drama Therapy	7	7	5	7	4	5	6	7
MA in Education	38	39	43	65	33	43	26	32
Ma in Education with Library Media Endorsement	3	2						
MA in Education: Special Education Endorsement	1	1						
MA in Environment & Community	1	1						
MA in Organizational Development	1	1						
MA in Psychology: Integrative Studies in Psychology	3	2	2	2			3	2
MA in Teaching	31	56	29	50	50	91	44	79
MA in Whole Systems Design	1	1						
PhD in Counselor Education and Supervision	7	7	8	9	15	14	12	10
Post Master's Certificate in Play Therapy	26	23	13	14	18	16	18	14
PsyD in Clinical Psychology	98	130	80	112	76	107	74	111
Teaching Endorsement			4	2	8	5	11	5

Notes: Data are as of August 2020. Includes the following completion types: degree, certificate, and external credential.

4 Student Demographics

Race/Ethnicity (ANNUAL)

		AY2016-17	AY2017-18	AY2018-19	AY2019-20
University Total	American/Alaskan Native	0%	1%	1%	0%
	Asian	3%	3%	3%	3%
	Black or African American	8%	9%	8%	7%
	Hispanic/Latino	12%	12%	11%	11%
	Non Resident Alien	4%	3%	3%	3%
	Other/Unknown	14%	14%	16%	19%
	Two or More Races	3%	3%	3%	3%
	White	55%	55%	56%	54%
GSLC	American/Alaskan Native	1%	1%	1%	1%
	Asian	1%	1%	0%	0%
	Black or African American	24%	24%	26%	25%
	Hispanic/Latino	5%	4%	6%	6%
	Non Resident Alien	1%	2%	3%	4%
	Other/Unknown	26%	25%	19%	16%
	White	42%	44%	46%	49%
Los Angeles	American/Alaskan Native	0%	0%	0%	0%
	Asian	4%	4%	3%	4%
	Black or African American	11%	11%	9%	7%
	Hispanic/Latino	17%	18%	16%	15%
	Non Resident Alien	3%	2%	2%	0%
	Other/Unknown	16%	15%	18%	20%
	Two or More Races	5%	4%	4%	4%
	White	45%	44%	48%	49%
Midwest	American/Alaskan Native	0%	0%	0%	0%
	Asian	1%	3%	3%	2%
	Black or African American	22%	24%	19%	13%
	Hawaiian/Pacific Islander	0%	0%	1%	2%
	Hispanic/Latino	3%	2%	2%	3%
	Non Resident Alien	1%	1%	0%	2%
	Other/Unknown	5%	6%	6%	6%
	Two or More Races	1%	1%	1%	0%
	White	67%	62%	67%	73%

Race/Ethnicity (ANNUAL) Cont.

		AY2016-17	AY2017-18	AY2018-19	AY2019-20
New England	American/Alaskan Native	1%	1%	1%	0%
	Asian	2%	2%	2%	2%
	Black or African American	4%	3%	3%	4%
	Hispanic/Latino	4%	4%	5%	5%
	Non Resident Alien	4%	3%	4%	3%
	Other/Unknown	17%	16%	16%	19%
	Two or More Races	2%	2%	3%	2%
	White	67%	68%	67%	64%
Online	American/Alaskan Native	0%	0%	2%	0%
	Asian	0%	1%	2%	0%
	Black or African American	15%	14%	19%	19%
	Hispanic/Latino	4%	5%	10%	10%
	Non Resident Alien	0%	0%	0%	1%
	Other/Unknown	17%	15%	18%	22%
	Two or More Races	4%	6%	5%	3%
	White	59%	60%	44%	42%
Santa Barbara	Asian	2%	1%	1%	1%
	Black or African American	3%	4%	3%	2%
	Hispanic/Latino	32%	29%	27%	25%
	Non Resident Alien	11%	8%	8%	8%
	Other/Unknown	5%	9%	11%	15%
	Two or More Races	3%	3%	3%	3%
	White	44%	45%	47%	45%
Seattle	American/Alaskan Native	1%	1%	1%	0%
	Asian	3%	4%	4%	5%
	Black or African American	5%	5%	5%	4%
	Hispanic/Latino	7%	8%	8%	9%
	Non Resident Alien	3%	2%	2%	2%
	Other/Unknown	13%	15%	16%	18%
	Two or More Races	5%	4%	4%	4%
	White	63%	62%	60%	58%

Gender (ANNUAL)

		AY2016-17	AY2017-18	AY2018-19	AY2019-20
University Total	Female	76%	75%	76%	76%
	Male	23%	24%	23%	23%
	Unknown	1%	1%	1%	1%
GSLC	Female	72%	71%	72%	74%
	Male	25%	26%	25%	24%
	Unknown	3%	3%	3%	2%
Los Angeles	Female	70%	66%	70%	71%
	Male	29%	31%	27%	27%
	Unknown	2%	3%	3%	2%
Midwest	Female	79%	76%	67%	82%
	Male	21%	24%	33%	17%
New England	Female	81%	82%	80%	80%
	Male	19%	18%	20%	20%
Online	Female	86%	85%	78%	75%
	Male	14%	15%	22%	25%
Santa Barbara	Female	70%	71%	74%	73%
	Male	30%	29%	26%	27%
Seattle	Female	82%	81%	81%	81%
	Male	17%	17%	18%	17%
	Unknown	1%	2%	1%	2%

5 Degrees Conferred

Degrees Conferred by Program: Los Angeles

	AY2016-17	AY2017-18	AY2018-19
BA in Applied Arts & Media		1	2
BA in Applied Studies		2	3
BA in Liberal Studies	45	52	40
BS in Applied Tech & Business Leadership		5	4
Cert in Clear Credential - Education	26	25	
Cert in Teaching Credential, Education	2		
Cert in Teaching Credl: Preliminary		1	
Cert in Urban Sustainability			
Cert in Web Development	23	57	4
MA in Clinical Psychology	140	136	177
MA in Education	11	12	17
MA in Education with Teaching Credential	4	7	7
MA in Nonprofit Management	12	22	16
MA in Psychological Studies		3	1
MA in Psychology (Individualized)	4	6	4
MA in Urban Sustainability	6	11	6
MFA in Creative Writing	54	55	33
Post-MFA Cert in Teaching of Creative Writing	6	8	5
Teaching Credential	1	5	
CAMPUS TOTAL	334	408	319

Notes: Data are as of August 2020.

Degrees Conferred by Program: Midwest

	AY2016-17	AY2017-18	AY2018-19
BA in Early Childhood Education	4	2	10
BA in Health & Wellness	3		
BA in Human Services Administration	4	2	6
BA in Humanities	1		
BA in Liberal Studies	4	1	8
BA in Management	5	5	4
BS in Applied Technology & Business Leadership		1	5
BS in Healthcare Administration		2	3
Cert in Dyslexia Studies	4	3	12
Cert in Reggio Emilia Approach (REA)		1	
MA in Conflict Analysis & Engagement	3	1	
MA in Conflict Analysis & Resolution		2	
MA in Individualized Studies	6	4	6
MA in Individualized Studies: Creative Writing	5	1	
MA in Individualized Studies: Philosophy	3		1
MA in Management & Change Leadership	3	3	5
MEd in Education	12	8	15
MEd in Education with Teaching Credential	20	8	21
Ohio Principal License			2
Teaching Endorsement	30	5	4
Teaching Endorsement - 2nd License	6	1	2
CAMPUS TOTAL	113	50	104

Notes: Data are as of August 2020.

Degrees Conferred by Program: GSLC

	AY2016-17	AY2017-18	AY2018-19
MA in Leadership & Change	14	17	21
MA in Leadership & Change for Healthcare		2	4
PhD in Leadership & Change	15	13	11
CAMPUS TOTAL	29	32	36

Notes: Data are as of August 2020.

Degrees Conferred by Program: New England

	AY2016-17	AY2017-18	AY2018-19
Cert in Applied Behavior Analysis	4		1
Cert in Autism Spectrum Disorders	1		
Cert in Environmental & Sustainability Education		15	13
Cert in Environmental Studies		5	12
Cert in Mindfulness for Educators	3	2	4
Cert in Nature Based Early Childhood Education	2	6	8
Cert in Sustainable Business		6	3
Cert in Waldorf Education	6	17	23
MA in Clinical Mental Health Counseling	16	24	47
MA in Dance/Movement Therapy & Counseling	7	11	6
MA in Interdisciplinary Studies		3	2
MA in Marriage & Family Therapy	5	6	10
MBA in Sustainability	11	4	4
MEd for Experienced Educators	20	20	18
MEd for Integrated Day	2		
MEd for Integrated Learning	13	7	
MEd in Education with Teacher Certification	1		5
MEd in Waldorf Education	12	20	18
MS in Applied Behavior Analysis	11	19	11
MS in Environmental Studies	33	37	56
MS in Interdisciplinary Environmental Studies			39
MS in Psychology	33	19	19
PhD in Environmental Studies	9	4	10
PhD in Marriage & Family Therapy	1		
PM Cert in Clinical Mental Health Counseling	2		2
PM Cert in Counseling Military Personnel & Their Families		2	1
PM Cert in Respecialization in Marriage & Family Therapy	2	1	
PM Principal Cert in Educational Leadership & Administration	4		2
PsyD in Clinical Psychology	9	26	26
CAMPUS TOTAL	207	254	340

Notes: Data are as of August 2020.

Degrees Conferred by Program: Online

	AY2016-17	AY2017-18	AY2018-19
BA in Human Services Administration	23	12	6
BA in Humanities & Creative Writing		1	
BA in Liberal Studies	18	33	24
BA in Management	12	12	2
BS in Applied Technology & Business Leadership	1		
CAMPUS TOTAL	54	58	32

Notes: Data are as of August 2020.

Degrees Conferred by Program: Santa Barbara

	AY2016-17	AY2017-18	AY2018-19
BA in Liberal Studies	84	65	51
BA in Psychology			
Cert in Clear Credential - Education		1	
Cert in Nature Based Early Childhood Education		1	2
Cert in Somatic Psychotherapy		7	
Cert in Women & Leadership	26		
MA in Clinical Psychology	48	32	50
MA in Education	6	5	7
MA in Education with Teaching Credential	1	4	2
MA in Psychology (Non-Clinical)	14	8	7
Master of Business Administration	9	7	12
MEd in Education with Teaching Credential	4	6	3
MFA in Writing & Contemporary Media			10
PsyD in Clinical Psychology	11	9	16
Teaching Credential	1	4	1
CAMPUS TOTAL	204	149	161

Notes: Data are as of August 2020.

Degrees Conferred by Program: Seattle

	AY2016-17	AY2017-18	AY2018-19
BA in Health Counseling & Psychology			
BA in Liberal Studies	33	28	24
Cert in Culturally Responsive Early Childhood Education		15	31
Da Vinci High Program	3	2	
MA in Clinical Mental Health Counseling	23	31	34
MA in Clinical Mental Health Counseling with Art Therapy	9	12	11
MA in Clinical Mental Health Counseling with Drama Therapy	2	1	1
MA in Communication	1		
MA in Counseling: Clinical MHC w/Drama & Art Therapy	1		
MA in Couple & Family Therapy	30	25	29
MA in Couple & Family Therapy with Art Therapy		4	2
MA in Couple & Family Therapy with Drama Therapy	3	1	2
MA in Education	24	20	24
Ma in Education with Library Media Endorsement	3		
MA in Education: Special Education Endorsement	1		
MA in Environment & Community	1		
MA in Organizational Development	2		
MA in Psychology (Non-Clinical)	10	6	11
MA in Psychology: Integrative Studies in Psychology		3	
MA in Teaching	21	9	21
MA in Whole Systems Design	1		
PhD in Counselor Education & Supervision			
Post Master's Cert in Play Therapy	8	15	10
PsyD in Clinical Psychology	22	12	14
Teaching Endorsement	1		1
CAMPUS TOTAL	199	184	215

Notes: Data are as of August 2020.

6 Retention and Graduation Rates

Retention and graduation data only include degree programs, non-degree programs are not included. Data are based on headcounts, whether the student is full-time or part-time is not taken into account. This is because many students may shift between full-time to part-time during their academic career.

Retention and graduation data are currently based on an "annual" definition. If a student enrolled for at least one term in the following academic year, that student is counted as retained. Graduation rates are based on last academic year enrolled, which may be different from academic year conferred.

DEFINITIONS

COHORT COUNT: Distinct count of all new students by Academic Year. All academic terms of entry are included, from summer to spring.

RACE: Color - American/Alaskan Native, Asian, Black/African American, Hawaiian/Pacific Islander, Hispanic/Latin, Two or More Race. Other - Non Resident Alien, Other/Unknown

AGE - based on age of student when they started the academic program.

6.1 Undergraduate Degree Program Outcomes

Retention: Undergraduate Degree Programs

Academic Year Entered	Cohort Count	Yr 1	Yr 2	Yr 3	Yr 4	Yr 5	Yr 6
BA							
2010	174	100%	86%	48%	20%	7%	3%
2011	204	100%	80%	39%	14%	4%	0%
2012	163	100%	84%	48%	17%	6%	2%
2013	200	100%	83%	41%	13%	3%	2%
2014	302	100%	84%	44%	16%	7%	2%
2015	283	100%	72%	39%	16%	7%	
2016	245	100%	78%	37%	14%		
2017	206	100%	72%	38%			
2018	282	100%	66%				
2019	256	100%					
Average		100%	78%	42%	16%	6%	2%

Cumulative Graduation: Undergraduate Degree Programs

Academic Year Entered	Cohort Count	Yr 1	Yr 2	Yr 3	Yr 4	Yr 5	Yr 6
BA							
2010	174	3%	32%	57%	70%	74%	74%
2011	204	1%	38%	62%	68%	71%	71%
2012	163	1%	29%	55%	65%	66%	68%
2013	200	1%	33%	57%	65%	66%	67%
2014	302	1%	27%	49%	58%	62%	
2015	283	2%	26%	46%	53%		
2016	245	2%	28%	51%			
2017	206	3%	29%				
2018	282	4%					
2019	256						
Average		2%	30%	54%	63%	68%	70%

6.2 Master's Degree Program Outcomes

Retention: Master's Degree Programs

Academic Year Entered	Cohort Count	Yr 1	Yr 2	Yr 3	Yr 4	Yr 5	Yr 6
2010	764	100%	92%	41%	10%	3%	2%
2011	724	100%	90%	44%	11%	5%	2%
2012	687	100%	91%	60%	18%	7%	2%
2013	679	100%	92%	59%	21%	9%	4%
2014	683	100%	91%	56%	23%	9%	4%
2015	691	100%	79%	54%	20%	8%	
2016	710	100%	88%	61%	22%		
2017	796	100%	88%	63%			
2018	816	100%	88%				
2019	854	100%					
Average		100%	89%	55%	18%	7%	3%

Cumulative Graduation: Master's Degree Programs

Academic Year Entered	Cohort Count	Yr 1	Yr 2	Yr 3	Yr 4	Yr 5	Yr 6
2010	764	0%	36%	70%	81%	82%	83%
2011	724	0%	30%	67%	73%	77%	77%
2012	687	0%	23%	57%	75%	79%	80%
2013	679	0%	20%	62%	73%	78%	81%
2014	683	0%	25%	54%	67%	73%	
2015	691	1%	21%	51%	64%		
2016	710	2%	18%	56%			
2017	796	1%	17%				
2018	816	0%					
2019	854						
Average		0%	24%	60%	72%	78%	80%

6.3 Doctoral Degree Program Outcomes

Retention: Doctoral Degree Programs

Academic Year Entered	Cohort Count	Yr 1	Yr 2	Yr 3	Yr 4	Yr 5	Yr 6	Yr 7
2010	103	100%	90%	86%	83%	77%	61%	42%
2011	86	100%	90%	84%	78%	73%	55%	35%
2012	82	100%	90%	80%	79%	71%	59%	32%
2013	99	100%	94%	91%	87%	79%	65%	34%
2014	84	100%	93%	90%	82%	80%	75%	
2015	100	100%	93%	92%	90%	80%		
2016	99	100%	94%	91%	87%			
2017	97	100%	90%	82%				
2018	101	100%	86%					
2019	91	100%						
Average		100%	91%	87%	84%	77%	63%	36%

Cumulative Graduation: Doctoral Degree Programs

Academic Year Entered	Cohort Count	Yr 1	Yr 2	Yr 3	Yr 4	Yr 5	Yr 6	Yr 7
2010	103	0%	0%	0%	3%	15%	36%	46%
2011	86	0%	0%	1%	6%	14%	31%	42%
2012	82	0%	0%	1%	2%	10%	35%	41%
2013	99	0%	0%	0%	2%	11%	39%	
2014	84	0%	0%	0%	1%	7%		
2015	100	0%	0%	0%	3%			
2016	99	0%	0%	0%				
2017	97	0%	0%					
2018	101	0%						
2019	91							
Average		0%	0%	0%	3%	11%	36%	43%

6.4 Average Outcomes by Academic Level

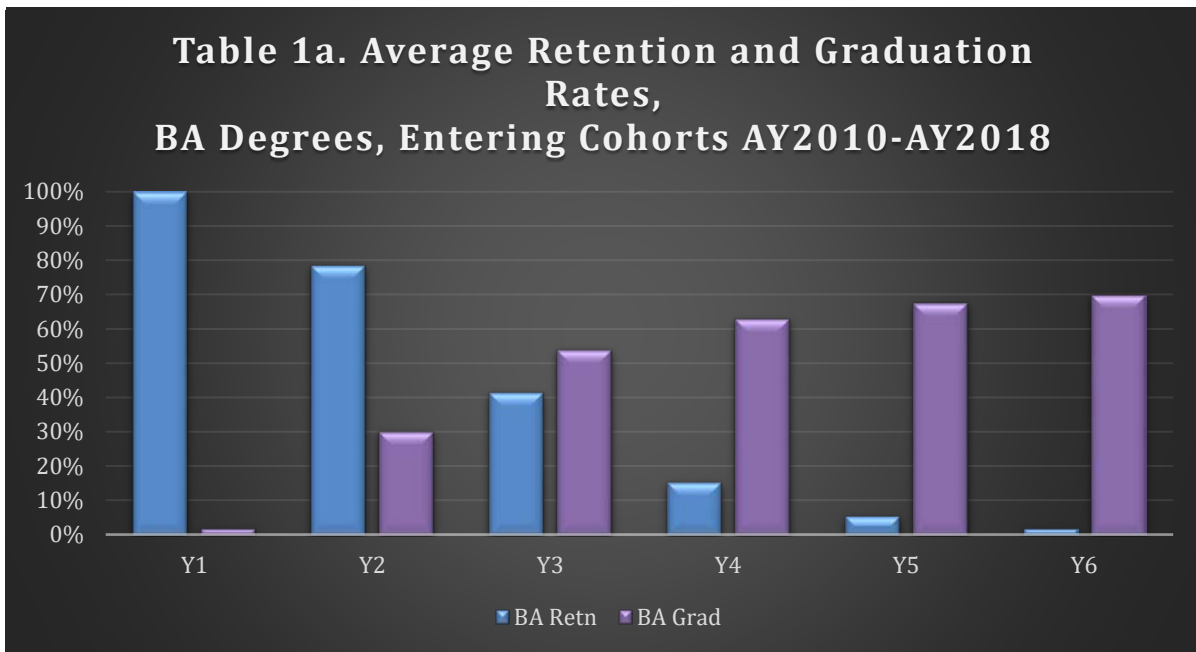


Table 1b. Average Retention and Graduation Rates, MA Degrees, Entering Cohorts AY2010-AY2018

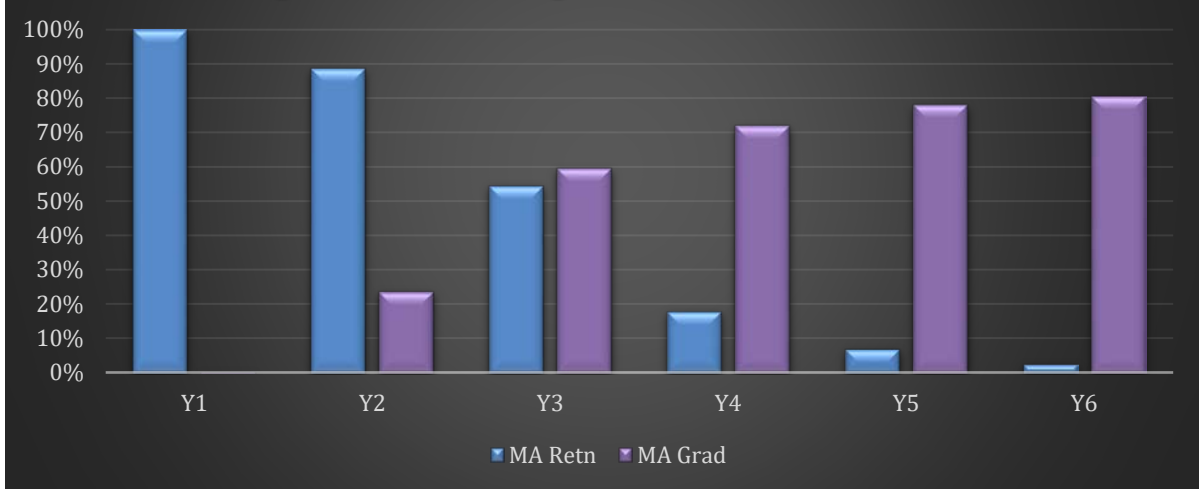
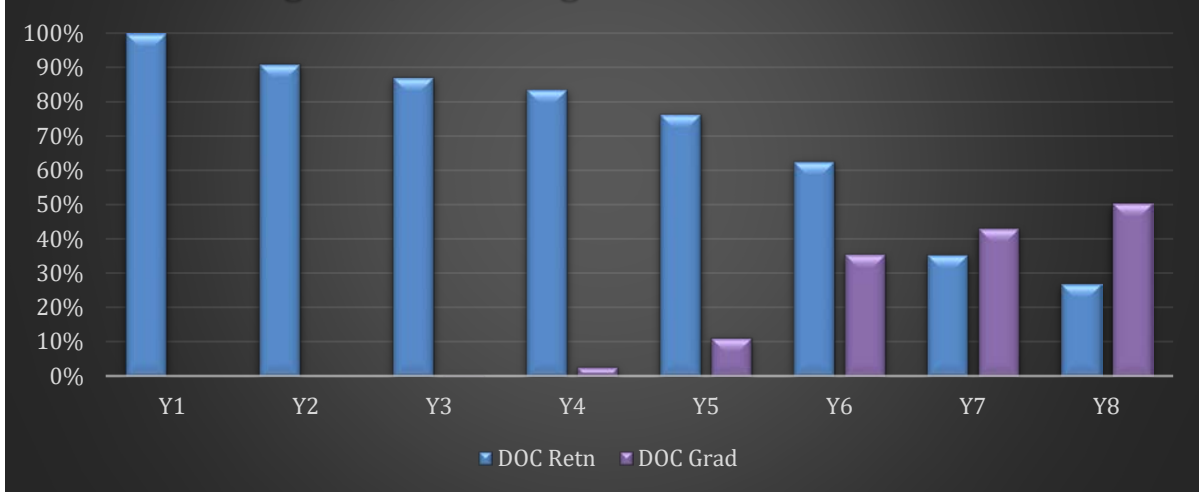
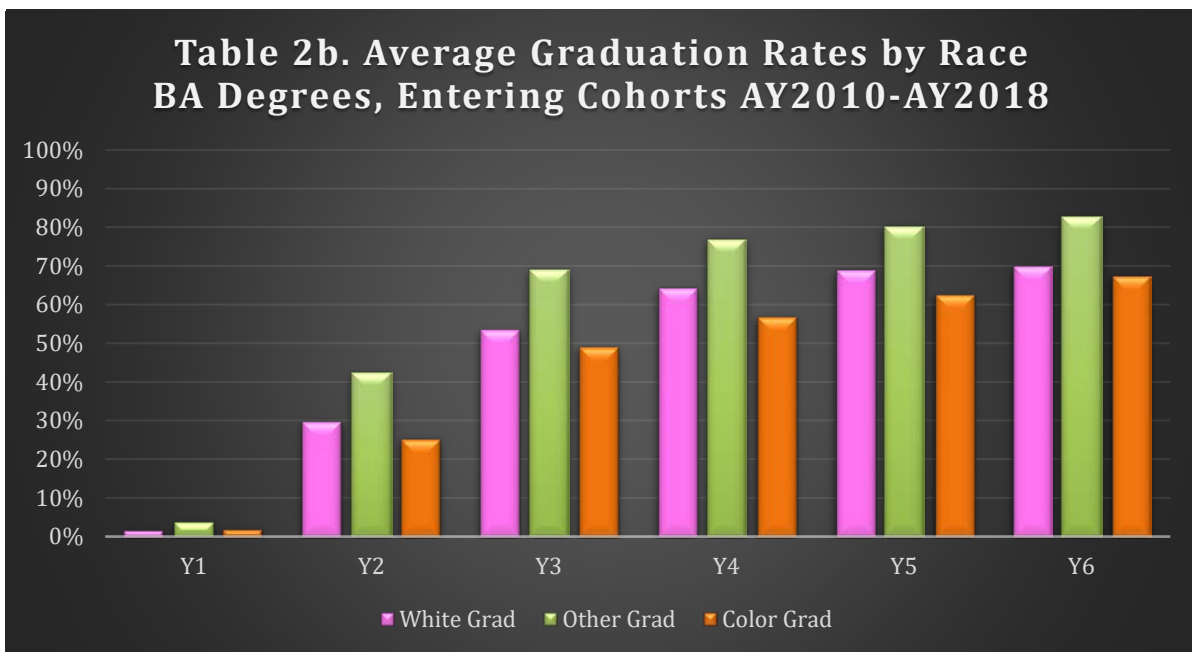
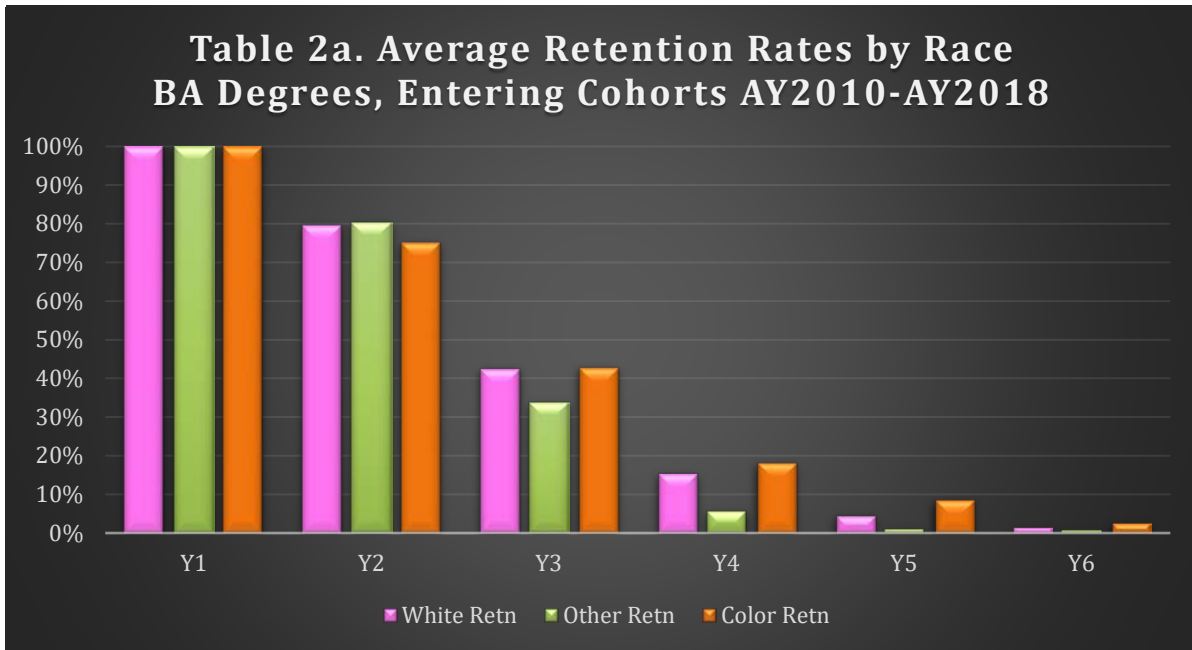


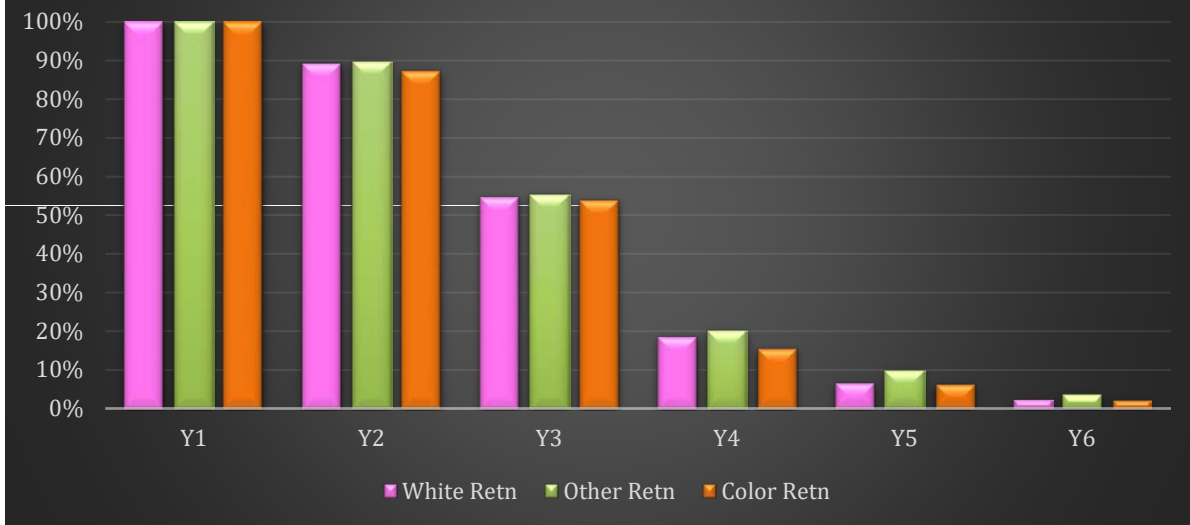
Table 1c. Average Retention and Graduation Rates, DOC Degrees, Entering Cohorts AY2010-AY2018



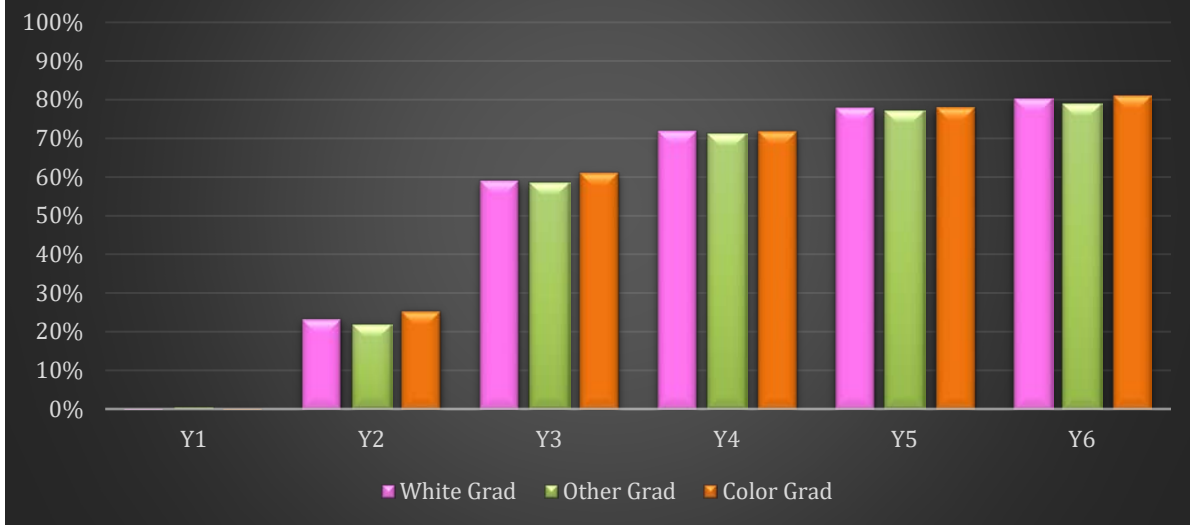
6.5 Average Outcomes by Race



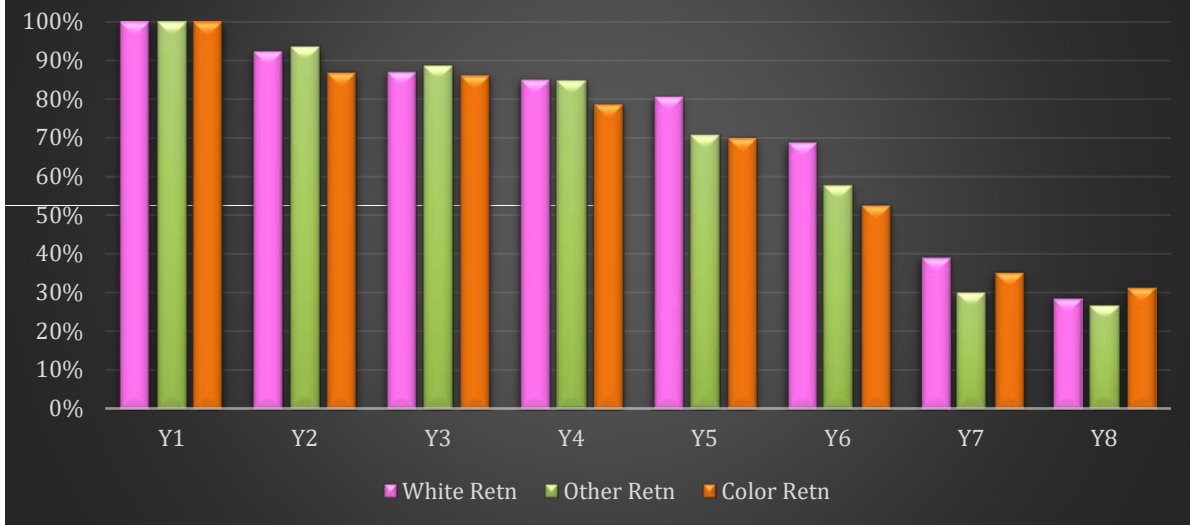
**Table 2c. Average Retention Rates by Race
MA Degrees, Entering Cohorts AY2010-AY2018**



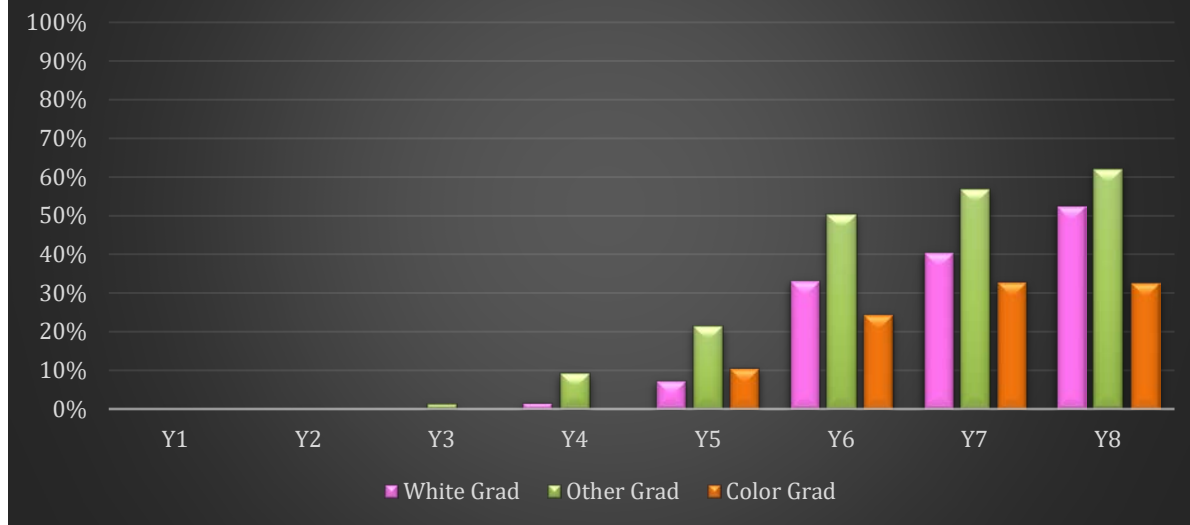
**Table 2d. Average Graduation Rates by Race
MA Degrees, Entering Cohorts AY2010-AY2018**



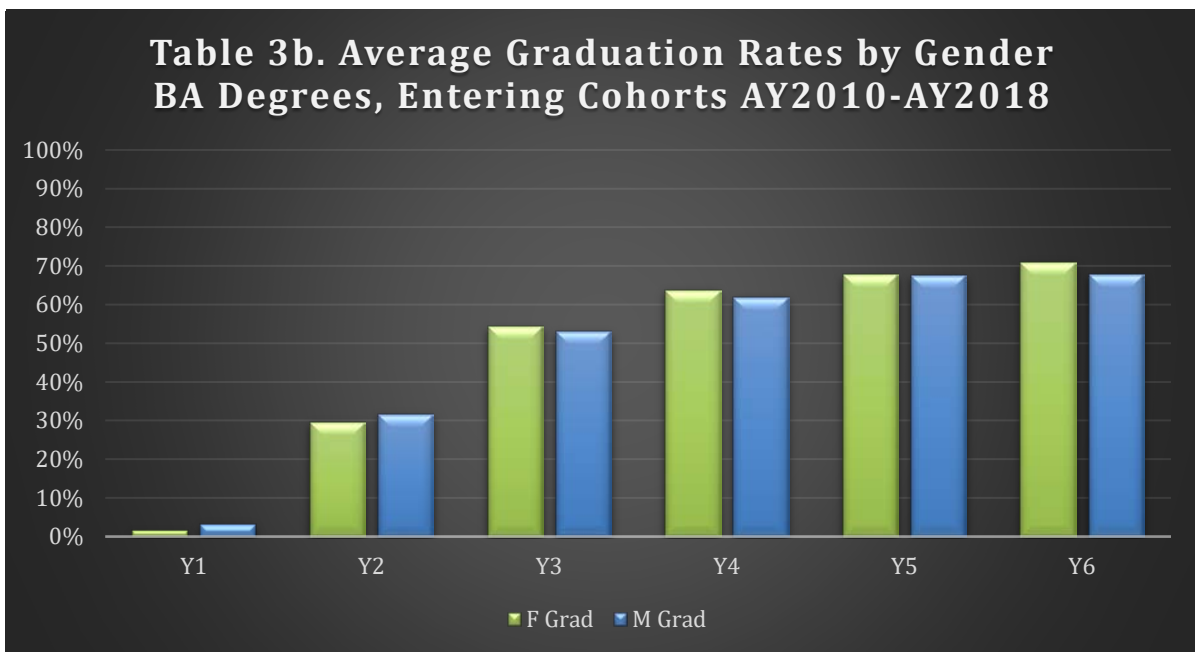
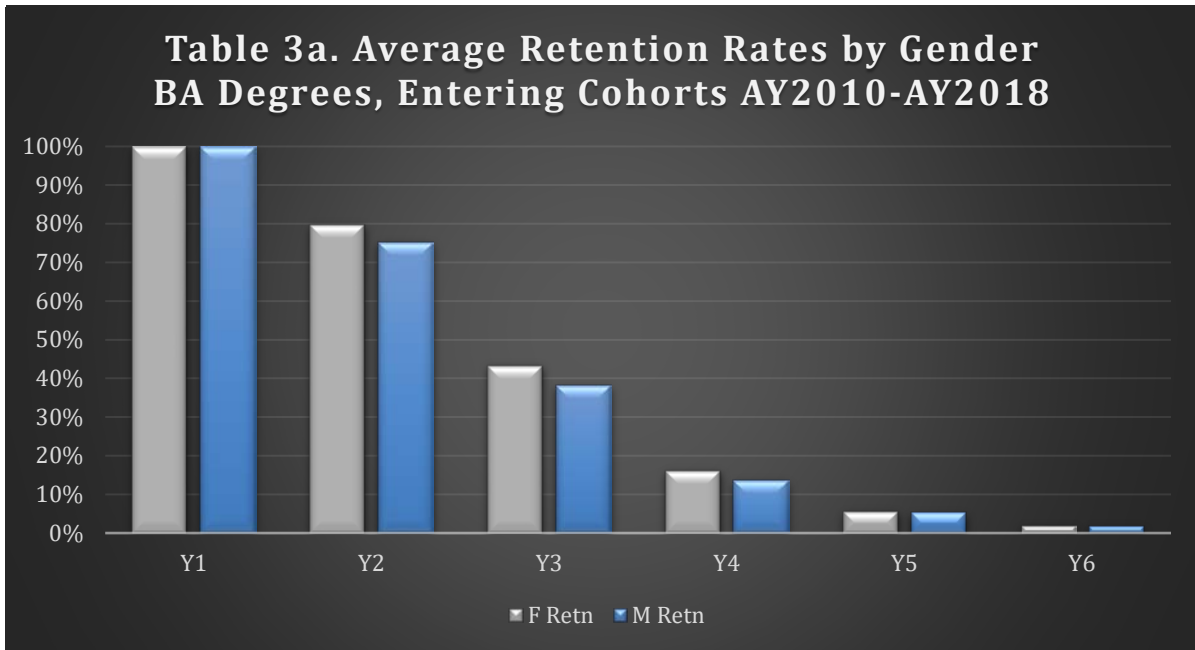
**Table 2e. Average Retention Rates by Race
DOC Degrees, Entering Cohorts AY2010-AY2018**



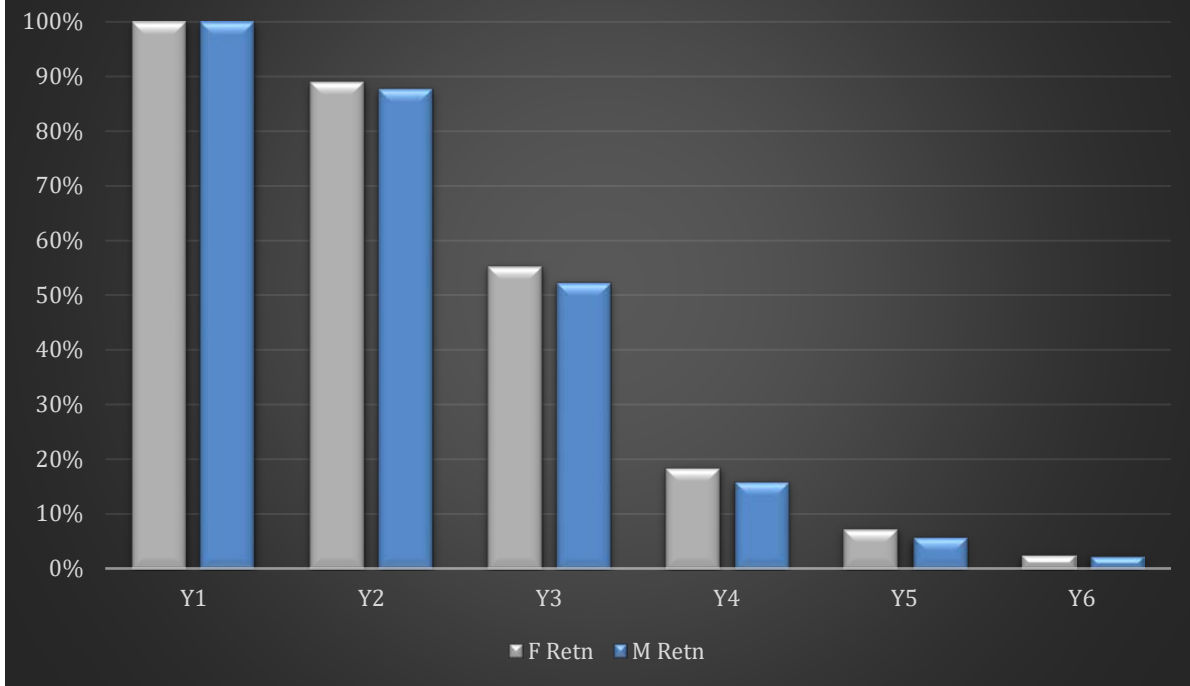
**Table 2f. Average Graduation Rates by Race
DOC Degrees, Entering Cohorts AY2010-AY2018**



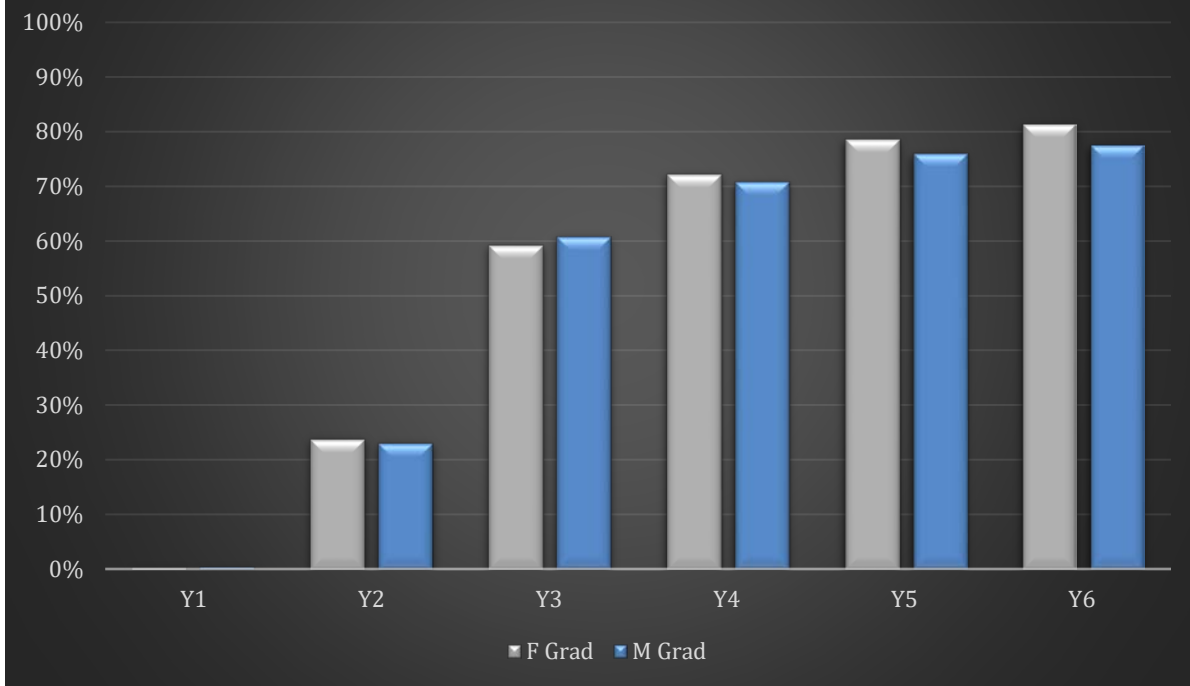
6.6 Average Outcomes by Gender



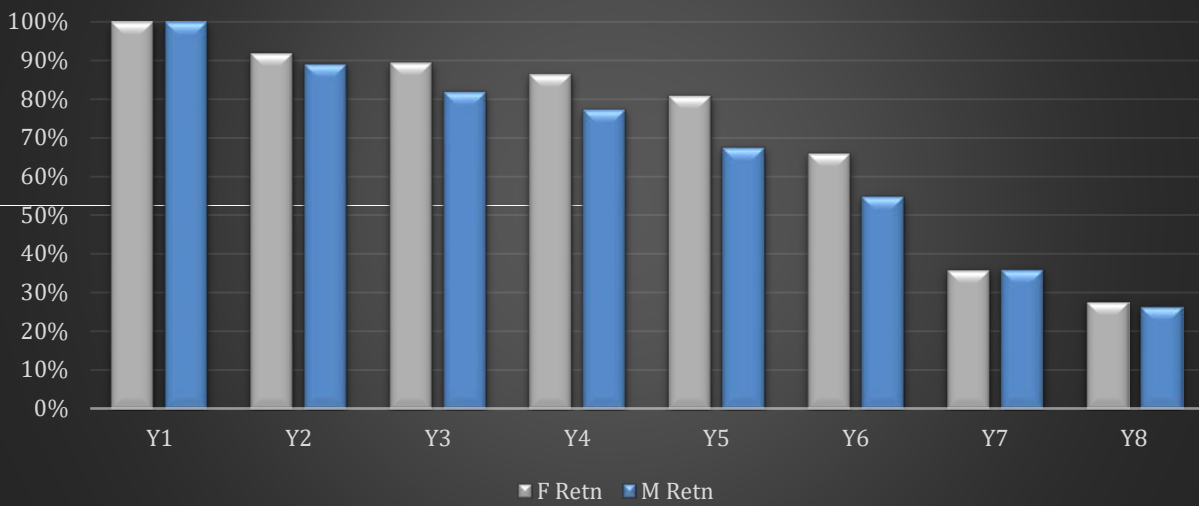
**Table 3c. Average Retention Rates by Gender
MA Degrees, Entering Cohorts AY2010-AY2018**



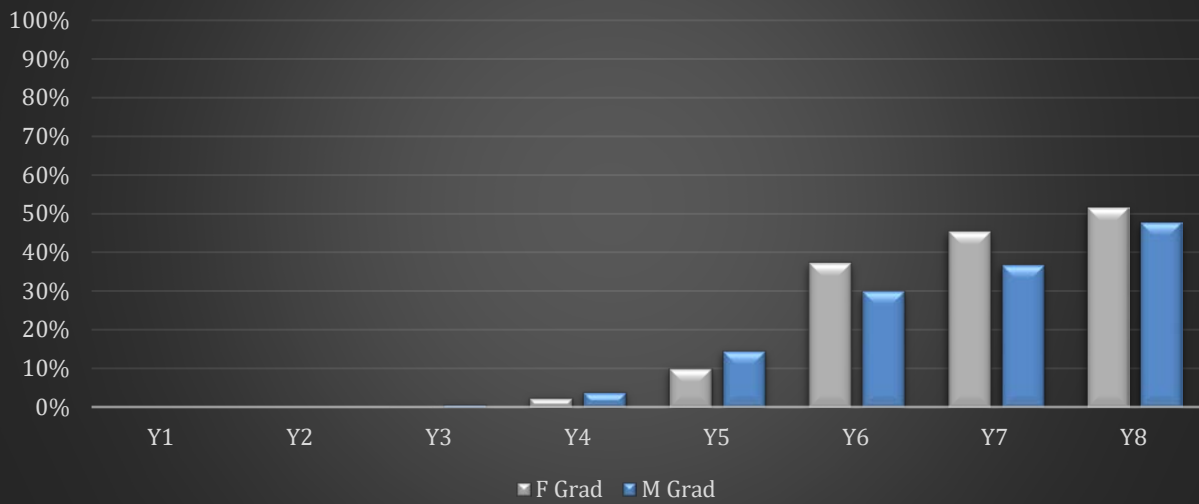
**Table 3d. Average Graduation Rates by Gender
MA Degrees, Entering Cohorts AY2010-AY2018**



**Table 3e. Average Retention Rates by Gender
DOC Degrees, Entering Cohorts AY2010-AY2018**



**Table 3f. Average Graduation Rates by Gender
DOC Degrees, Entering Cohorts AY2010-AY2018**



6.7 Outcomes by Academic Level by Age

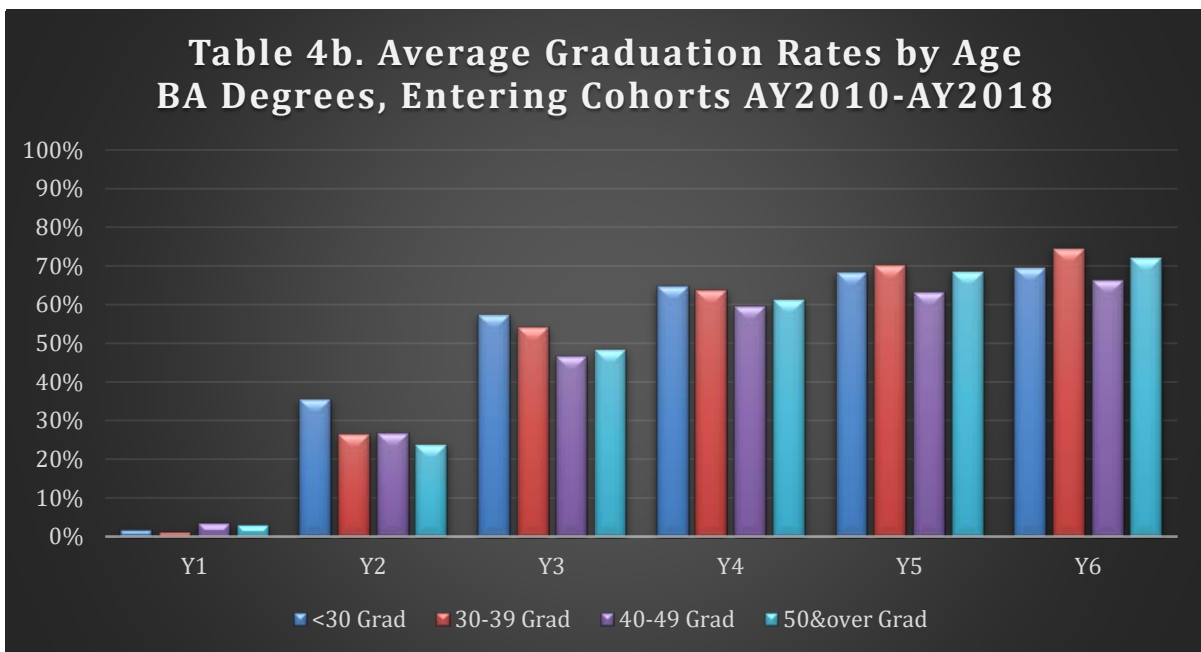
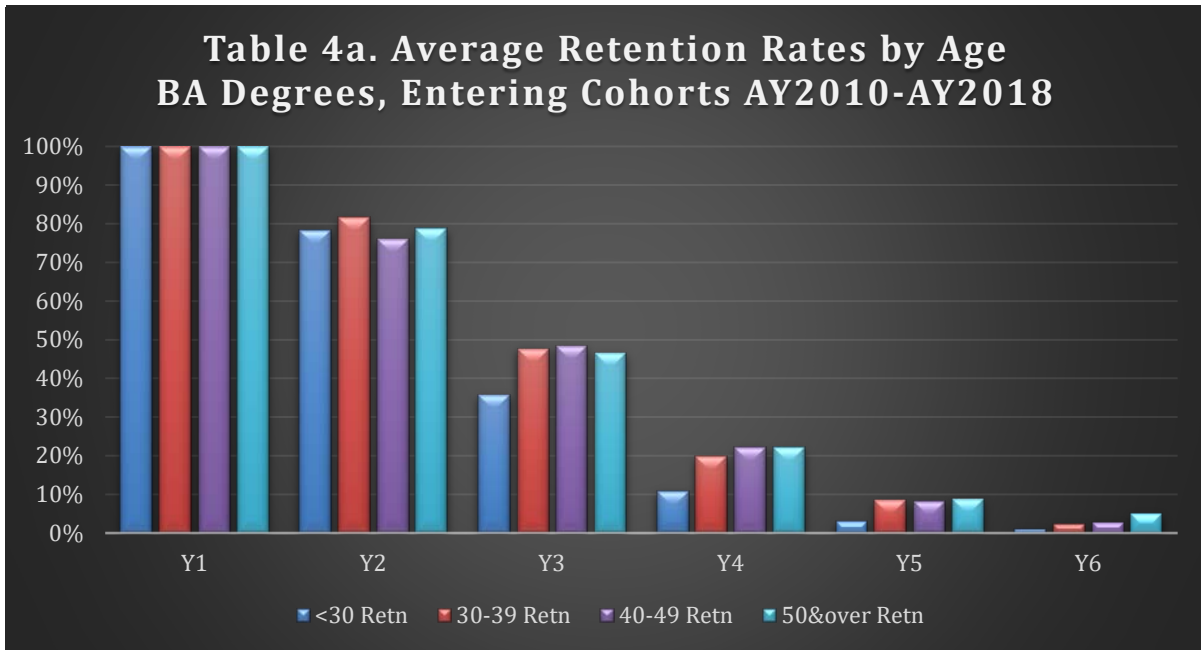


Table 4c. Average Retention Rates by Age MA Degrees, Entering Cohorts AY2010-AY2018

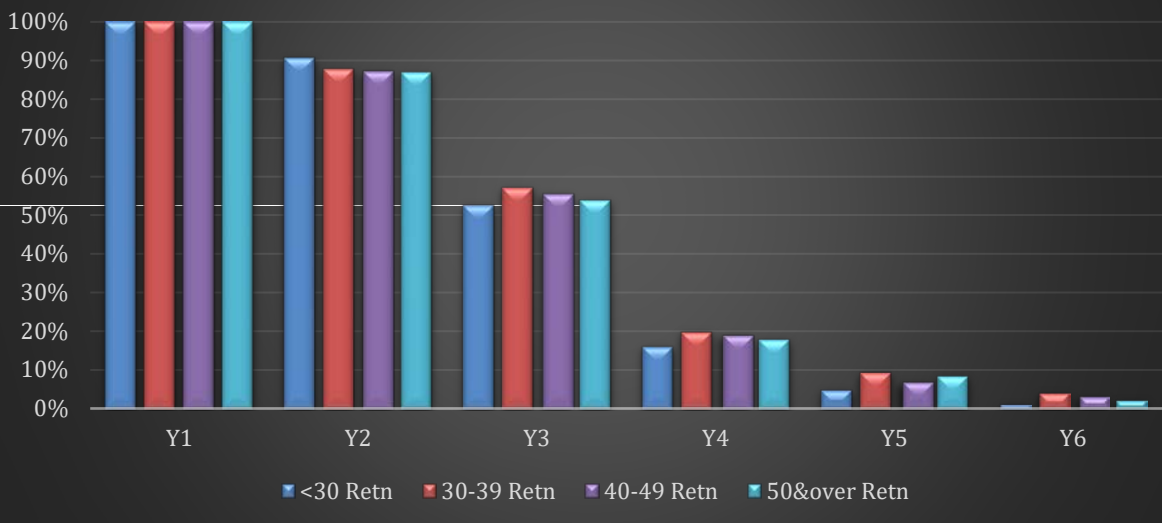
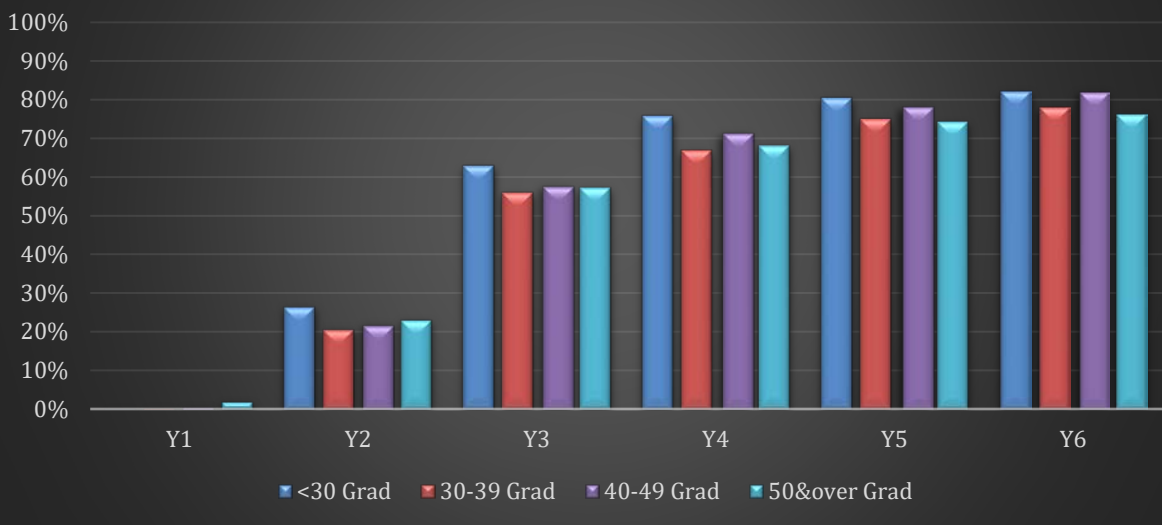


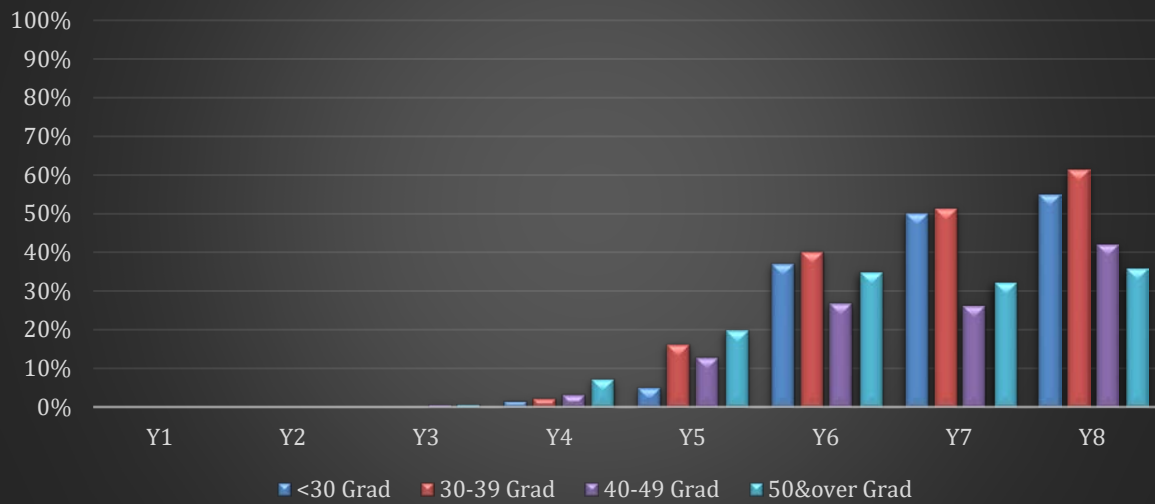
Table 4d. Average Graduation Rates by Age MA Degrees, Entering Cohorts AY2010-AY2018



**Table 4e. Average Retention Rates by Age
DOC Degrees, Entering Cohorts AY2010-AY2018**



**Table 4f. Average Graduation Rates by Age
DOC Degrees, Entering Cohorts AY2010-AY2018**



7 Faculty and Staff

Employee numbers are for salaried and hourly employees for whom we collect payroll taxes only; they do not include work study students, temporary employees, employees from temporary agencies, or those on personal service contracts (aka “independent contractors”).

Please Note: There were changes in the classification of employees in late 2016 due to IRS regulations. This, along with other system changes/updates, has re-classified many employees across categories that may cause comparisons to previous years very difficult. Hence we are only showing 2 years of data in this section.

DEFINITIONS

HEADCOUNT: Unduplicated headcounts of employees by campus and Faculty/Staff status. Employees are counted only once per campus, regardless of the number of positions they hold. However, if an employee holds a position at more than one campus they are represented under each campus headcount. Likewise, if an employee hold both a teaching and non-teaching position they are represented under each category.

UNIVERSITY TOTAL: Headcount is unduplicated, this is not a sum of the campuses, but rather a true unduplicated headcount

CORE FACULTY: Full-time, benefited faculty positions on two-year renewable or three-year rolling contracts

NON-CORE FULL-TIME FACULTY: Full-time benefited faculty on one-year or two-year non-renewable contracts

PART-TIME FACULTY: Non-benefited faculty

ADMINISTRATOR: Senior leadership, Deans and Directors

ADMINISTRATIVE ASSOCIATE: Salaried mid-level staff positions

UNION STAFF: Represented hourly compensated employees

NON-UNION STAFF: Hourly compensated

TEMPORARY EMPLOYEES: Positions hired on a short-term, a part-time basis

7.1 Faculty Headcount

Faculty Headcounts

		FY2017-18	FY2018-19	FY2019-20
University Total	Core Full Time	113	110	129
	Non-core Full Time	71	73	59
	Part Time	682	666	815
	Total	866	849	1003
University Academic Affairs	Core Full Time	0	1	1
	Non-core Full Time	1	1	1
	Part Time	1	1	1
	Total	2	3	3
GSLC	Core Full Time	11	11	9
	Part Time	4	6	7
	Total	15	17	16
Los Angeles	Core Full Time	24	24	27
	Non-core Full Time	13	13	13
	Part Time	204	206	231
	Total	241	243	271
Midwest	Core Full Time	6	4	1
	Non-core Full Time	5	3	1
	Part Time	53	53	51
	Total	64	60	53
New England	Core Full Time	42	36	46
	Non-core Full Time	24	26	10
	Part Time	139	143	155
	Total	205	205	211
Online	Core Full Time	2	2	3
	Non-core Full Time			1
	Part Time	28	16	59
	Total	30	18	63
Santa Barbara	Core Full Time	9	7	8
	Non-core Full Time	5	8	6
	Part Time	130	118	142
	Total	144	133	156
Seattle	Core Full Time	19	25	34
	Non-core Full Time	23	22	27
	Part Time	122	122	169
	Total	164	169	230

7.2 Faculty Demographics

Full Time Faculty - Gender

		FY2017-18	FY2018-19	FY2019-20
University Total	Female	62%	62%	67%
	Male	38%	37%	33%
University Academic Affairs	Female	100%	100%	33%
	Male	0%	0%	67%
GSLC	Female	56%	55%	69%
	Male	44%	46%	31%
Los Angeles	Female	47%	49%	62%
	Male	53%	51%	38%
Midwest	Female	50%	43%	55%
	Male	50%	57%	45%
New England	Female	68%	66%	75%
	Male	32%	32%	25%
Online	Female	50%	50%	48%
	Male	50%	50%	52%
Santa Barbara	Female	75%	67%	67%
	Male	25%	33%	33%
Seattle	Female	66%	70%	73%
	Male	34%	30%	27%

Full Time Faculty - Race/Ethnicity

		FY2017-18	FY2018-19	FY2019-20
University Total	American/Alaska Native	1%	1%	1%
	Asian	8%	8%	5%
	Black or African American	3%	4%	7%
	Hispanic/Latino	2%	2%	8%
	Non Resident Alien	1%	0%	0%
	Other/Unknown	1%	4%	6%
	Two or More Races	2%	2%	2%
	White	82%	79%	70%
University Academic Affairs	Hispanic/Latino	0%	0%	33%
	White	100%	100%	67%
GSLC	Asian	22%	18%	6%
	Black or African American	0%	0%	6%
	Hispanic/Latino	0%	0%	6%
	Other/Unknown	11%	18%	19%
	White	67%	64%	63%

Los Angeles	Asian	13%	11%	7%
	Black or African American	6%	8%	11%
	Hispanic/Latino	3%	3%	14%
	Other/Unknown	0%	3%	6%
	Two or More Races	0%	0%	3%
	White	78%	76%	56%
Midwest	Black or African American	0%	0%	9%
	Hispanic/Latino	0%	0%	2%
	Other/Unknown	0%	14%	4%
	White	100%	86%	85%
New England	Asian	3%	4%	4%
	Black or African American	5%	7%	7%
	Hispanic/Latino	0%	0%	3%
	Non Resident Alien	2%	0%	
	Other/Unknown	0%	2%	4%
	Two or More Races	2%	2%	3%
	White	89%	87%	80%
Online	American/Alaska Native	0%	0%	2%
	Asian	0%	0%	5%
	Black or African American	0%	0%	6%
	Hispanic/Latino	0%	0%	6%
	Other/Unknown	0%	0%	14%
	Two or More Races	0%	0%	2%
	White	100%	100%	65%
Santa Barbara	American/Alaska Native	0%	0%	1%
	Asian	8%	13%	2%
	Black or African American	0%	0%	4%
	Hawaiian/Pacific Islander	0%	0%	1%
	Hispanic/Latino	0%	0%	11%
	Non Resident Alien	0%	0%	1%
	Other/Unknown	8%	13%	8%
	Two or More Races	0%	0%	1%
	White	83%	73%	73%
Seattle	American/Alaska Native	3%	2%	1%
	Asian	11%	11%	7%
	Black or African American	0%	2%	5%
	Hispanic/Latino	5%	4%	4%
	Other/Unknown	0%	0%	3%
	Two or More Races	8%	6%	3%
	White	74%	75%	76%

7.3 Staff Headcount

Full Time Staff Headcount

		FY2017-18	FY2018-19	FY2019-20
University Total	Administrative	90	92	87
	Admin Associate	37	36	33
	Non-Union Staff	86	76	90
	Part-Time Staff	24	26	26
	Union Staff	11	8	7
	Total	248	238	243
University Academic Affairs	Administrator	53	56	54
	Admin Associate	16	12	9
	Non-Union Staff	16	15	18
	Part-Time Staff	2	1	5
	Union Staff	5	6	7
	Total	92	90	93
GSLC	Administrator	1	2	2
	Admin Associate	2	3	2
	Part-Time Staff	1	1	2
	Total	4	6	6
Los Angeles	Administrator	5	5	4
	Admin Associate	5	5	6
	Non-Union Staff	18	19	23
	Part-Time Staff	3	3	4
	Total	31	32	37
Midwest	Administrator	5	1	0
	Non-Union Staff	5	2	2
	Part-Time Staff	2	1	0
	Union Staff	6	2	0
	Total	18	6	2
New England	Administrator	8	8	7
	Admin Associate	5	6	5
	Non-Union Staff	22	19	22
	Part-Time Staff	12	12	8
	Total	47	45	42
Online	Administrator	2	5	5
	Admin Associate	0	2	3
	Non-Union Staff	0	1	2
	Total	2	8	10

Santa Barbara	Administrator	5	2	2
	Admin Associate	7	7	6
	Non-Union Staff	10	4	7
	Part-Time Staff	1	3	3
	Total	23	16	18
Seattle	Administrator	11	13	13
	Admin Associate	2	1	2
	Non-Union Staff	15	16	16
	Part-Time Staff	3	5	4
	Total	31	35	35

7.4 Staff Demographics

Full Time Staff - Gender

		FY2017-18	FY2018-19	FY2019-20
University Total	Female	71%	70%	69%
	Male	29%	30%	31%
University Academic Affairs	Female	61%	60%	62%
	Male	39%	40%	38%
GSLC	Female	100%	100%	100%
Los Angeles	Female	67%	75%	63%
	Male	33%	25%	37%
Midwest	Female	88%	80%	50%
	Male	13%	20%	50%
New England	Female	77%	76%	77%
	Male	23%	24%	23%
Online	Female	100%	75%	70%
	Male	0%	25%	30%
Santa Barbara	Female	86%	85%	79%
	Male	14%	15%	21%
Seattle	Female	70%	74%	77%
	Male	30%	26%	23%

Full Time Staff - Race/Ethnicity

		FY2017-18	FY2018-19	FY2019-20
University Total	American/Alaska Native	1%	1%	1%
	Asian	7%	7%	5%
	Black or African American	8%	8%	10%
	Hispanic/Latino	8%	7%	9%
	Other/Unknown	2%	2%	3%
	Two or More Races	3%	4%	4%
	White	70%	72%	68%
University Academic Affairs	American/Alaska Native	1%	1%	1%
	Asian	6%	8%	7%
	Black or African American	3%	4%	7%
	Hispanic/Latino	7%	6%	6%
	Other/Unknown	1%	1%	1%
	Two or More Races	3%	3%	5%
	White	79%	76%	74%
GSLC	American/Alaska Native	0%	20%	25%
	White	100%	80%	75%
Los Angeles	Asian	19%	14%	13%
	Black or African American	19%	21%	22%
	Hispanic/Latino	26%	14%	16%
	Other/Unknown	0%	4%	6%
	Two or More Races	0%	4%	3%
	White	37%	43%	41%
Midwest	American/Alaska Native	6%		0%
	Black or African American	31%	40%	100%
	White	63%	60%	0%
New England	Asian	3%	0%	0%
	Hispanic/Latino	0%	0%	6%
	Two or More Races	6%	6%	3%
	White	91%	94%	91%
Online	Asian	50%	13%	0%
	Black or African American	0%	0%	10%
	Hispanic/Latino	0%	13%	0%
	Other/Unknown	0%	13%	20%
	Two or More Races	0%	13%	20%
	White	50%	50%	50%

Santa Barbara	Black or African American	5%	8%	71%
	Hispanic/Latino	18%	23%	29%
	Other/Unknown	9%	8%	7%
	Two or More Races	5%	8%	7%
	White	64%	54%	50%
Seattle	American/Alaska Native	4%	0%	0%
	Asian	15%	7%	3%
	Black or African American	12%	11%	13%
	Hispanic/Latino	4%	4%	10%
	Other/Unknown	8%	4%	0%
	Two or More Races	4%	0%	0%
	White	54%	75%	73%

8 Financial Aid

This section reports on all students. Headcount is unduplicated by campus. If a student was enrolled at more than one campus in the same academic year, they are counted under both locations.

DEFINITIONS

\$ ACCEPTED: The sum of dollars accepted by the student for each academic period of the year

OF STUDENTS: The number of total students (unduplicated) receiving awards

University Total

		AY2016-17		AY2017-18		AY2018-19		AY2019-20	
		\$ accepted	# of students	\$ accepted	# of students	\$ accepted	# of students	\$ accepted	# of students
Federal	Federal Pell Grant	1,182,492	374	1,036,281	326	1,078,518	306	1,070,134	296
	Federal PLUS Loan	12,128,264	750	12,262,262	753	13,088,241	752	13,232,024	749
	SEOG	788,653	363	803,918	323	695,542	253	666,087	298
	Subsidized Loan	2,162,400	467	1,644,058	384	1,411,026	347	1,491,459	355
	Unsubsidized Loan	41,891,403	2425	41,508,665	2395	41,646,396	2305	39,658,432	2232
	Other Federal Aid	78,172	30	43,638	17	35,833	11	16,914	5
Institutional	Inst Scholar - Endowed	75,191	40	66,934	28	46,000	19	31,250	15
	Inst Scholar - Funded	730,587	240	944,964	195	499,285	150	421,614	157
	Inst Scholar - Tuition Discount	1,725,576	584	1,691,278	617	1,509,081	483	1,366,296	473
State	Other State Aid	391,386	107	328,507	87	428,979	82	468,357	86
Other	Alternative Loans	167,529	16	264,205	22	291,266	20	346,283	26
	Other Financial Aid	222,666	109	137,809	101	101,397	47	153,006	113

Graduate School of Leadership and Change

		AY2016-17		AY2017-18		AY2018-19		AY2019-20	
		\$ accepted	# of students	\$ accepted	# of students	\$ accepted	# of students	\$ accepted	# of students
Federal	Federal PLUS Loan	737,422	31	886,729	38	1,209,630	44	1,205,515	43
	Unsubsidized Loan	2,197,246	91	1,798,086	75	1,763,959	76	1,657,777	73
Institutional	Inst Scholar - Funded	55,833	16	37,166	11	66,500	18	57,000	15
	Inst Scholar - Tuition Discount	17,556	9	14,889	6	24,520	8	16,130	7
Other	Alternative Loans			28,000	1	25,000	1	34,589	2

Los Angeles

		AY2016-17		AY2017-18		AY2018-19		AY2019-20	
		\$ accepted	# of students	\$ accepted	# of students	\$ accepted	# of students	\$ accepted	# of students
Federal	Federal Pell Grant	387,597	117	375,632	124	288,318	89	292,603	81
	Federal PLUS Loan	4,241,875	258	4,384,652	274	4,336,873	267	4,603,949	291
	SEOG	335,100	116	335,050	128	226,936	89	171,334	79
	Subsidized Loan	625,375	149	569,210	142	451,693	105	488,139	111
	Unsubsidized Loan	11,001,480	701	11,776,305	761	11,202,711	684	11,272,933	729
	Other Federal Aid	16,294	8	19,452	7	8,422	3	3,764	1
Institutional	Inst Scholar - Endowed	24,500	17	6,574	2				
	Inst Scholar - Funded	175,265	54	220,639	54	89,408	14	76,605	35
	Inst Scholar - Tuition Discount	779,319	258	718,719	307	664,064	236	646,403	225
State	Other State Aid	55,873	10	36,948	7	65,733	10	108,439	15
Other	Alternative Loans	86,580	7	77,901	5	98,516	9	111,261	8

Midwest

		AY2016-17		AY2017-18		AY2018-19		AY2019-20	
		\$ accepted	# of students	\$ accepted	# of students	\$ accepted	# of students	\$ accepted	# of students
Federal	Federal Pell Grant	121,549	38	121,933	32	115,542	25	12,828	5
	Federal PLUS Loan	11,483	3	36,829	3	17,800	2	19,350	1
	SEOG	89,100	32	76,326	31	61,999	19	6,335	6
	Subsidized Loan	110,092	29	180,155	37	159,607	31	10,438	4
	Unsubsidized Loan	2,438,678	163	1,810,265	134	1,537,827	96	268,400	28
	Other Federal Aid	40,970	15	21,384	9	19,939	7		
Institutional	Inst Scholar - Endowed	5,000	2						
	Inst Scholar - Funded	3,000	1			27,000	27	37,000	26
	Inst Scholar - Tuition Discount	118,344	63	117,391	67	118,313	60	20,250	15
State	Other State Aid	46,020	27	64,597	28	49,875	18	7,875	6
Other	Alternative Loans	7,484	2	20,275	4				

New England

		AY2016-17		AY2017-18		AY2018-19		AY2019-20	
		\$ accepted	# of students	\$ accepted	# of students	\$ accepted	# of students	\$ accepted	# of students
Federal	Federal PLUS Loan	2,227,548	156	1,988,134	132	2,748,930	147	2,743,743	133
	Unsubsidized Loan	12,770,628	557	12,151,897	566	11,941,183	544	11,242,975	513
	Other Federal Aid	11,184	3	2,802	1	7,472	1	9,398	3
Institutional	Inst Scholar - Endowed	28,441	16	40,360	22	41,000	18	26,250	14
	Inst Scholar - Funded	205,264	70	471,653	76	152,994	33	177,284	30
	Inst Scholar - Tuition Discount	586,492	179	728,791	194	570,462	134	442,701	133
Other	Alternative Loans	21,565	3	59,220	5	110,294	6	134,288	6
	Other Financial Aid	160,224	64	96,559	47	85,397	38	129,006	64

Online

		AY2016-17		AY2017-18		AY2018-19		AY2019-20	
		\$ accepted	# of students	\$ accepted	# of students	\$ accepted	# of students	\$ accepted	# of students
Federal	Federal Pell Grant	290,043	88	215,212	68	405,908	104	523,860	126
	Federal PLUS Loan							13,804	2
	SEOG	12,350	78	111,024	62	158,000	56	269,891	125
	Subsidized Loan	689,230	125	349,632	81	408,019	117	564,636	140
	Unsubsidized Loan	853,427	127	491,629	79	747,475	121	1,165,046	160
Insitutional	Inst Scholar - Tuition Discount			3,850	3			6,200	3
State	Other State Aid	17,180	9	21,504	8	23,250	8	56,436	18
Other	Alternative Loans	7,500	1	14,604	2			16,107	1

Santa Barbara

		AY2016-17		AY2017-18		AY2018-19		AY2019-20	
		\$ accepted	# of students	\$ accepted	# of students	\$ accepted	# of students	\$ accepted	# of students
Federal	Federal Pell Grant	232,769	69	208,318	56	174,955	54	151,390	48
	Federal PLUS Loan	1,556,490	87	1,961,731	105	2,255,299	116	2,088,598	108
	SEOG	197,525	73	154,018	56	153,605	56	124,929	51
	Subsidized Loan	384,608	85	299,864	65	230,238	55	214,874	53
	Unsubsidized Loan	3,991,221	284	4,154,233	270	4,465,062	272	4,003,984	253
	Other Federal Aid	9,724	4			16,000	9		
Insitutional	Inst Scholar - Funded	185,794	60	59,000	19	30,500	18	33,169	25
	Inst Scholar - Tuition Discount	220,866	74	96,121	37	123,510	35	194,334	76
State	Other State Aid	36,954	6	43,815	8			28,805	5
Other	Alternative Loans	24,900	2	29,205	2	30,866	2	31,200	3
	Other Financial Aid	62,442	25	41,250	25	33,406	4	24,000	24

Seattle

		AY2016-17		AY2017-18		AY2018-19		AY2019-20	
		\$ accepted	# of students	\$ accepted	# of students	\$ accepted	# of students	\$ accepted	# of students
Federal	Federal Pell Grant	150,533	63	113,211	46	93,795	34	89,301	38
	Federal PLUS Loan	3,353,446	217	3,004,187	202	2,519,709	176	2,557,065	171
	SEOG	154,578	64	123,500	46	95,002	33	93,087	39
	Subsidized Loan	353,095	80	245,197	59	161,469	39	211,538	49
	Unsubsidized Loan	8,611,682	508	9,326,250	511	9,988,179	512	10,044,983	510
Institutional	Inst Scholar - Endowed	17,250	5	20,000	4	5,000	1	5,000	1
	Inst Scholar - Funded	105,431	39	156,250	34	132,883	40	40,321	26
	Inst Scholar - Tuition Discount	3,000	2	5,700	3	8,213	10	18,834	12
State	Other State Aid	235,359	56	161,643	37	256,715	42	266,802	43
Other	Alternative Loans	19,500	1	35,000	3	26,590	2	29,488	4

9 Finance

Revenue And Expense Metrics

	FY2014-15	FY2015-16	FY2016-17	FY2017-18	FY2018-19
Revenue					
Tuition and Fees	\$59,881,203	\$59,325,440	\$58,625,610	\$58,501,979	\$58,748,470
Less Student Aid	-1,495,677	-1,716,215	-1,917,605	-1,246,621	-1,447,011
Net Tuition and Fees	58,385,526	57,609,225	56,708,005	57,255,358	57,301,459
Total Revenue and Gains	\$65,775,522	\$63,955,845	\$66,131,610	\$65,670,319	\$66,043,466
Educational and General					
Instruction	29,504,490	29,109,079	29,858,006	30,088,116	26,650,851
Research	96,649	159,244	268,943	296,290	362,255
Public Service	979,402	1,945,595	2,174,599	2,742,283	2,342,433
Academic Support	6,373,612	7,335,679	7,656,043	7,961,820	6,891,074
Student Services	5,798,514	5,867,033	5,613,087	5,656,965	4,987,928
Institutional Support	27,153,206	27,006,087	21,398,462	20,154,064	14,507,290
Operation and maintenance of plant					9,018,228
Scholarships and Fellowships	2,479,362	2,557,816	2,631,055	3,040,849	2,280,496
Total Educational and General	\$72,385,235	\$73,980,533	\$69,600,195	\$69,940,387	\$67,040,555
Auxiliary Expenses	\$350,040	\$387,159	\$351,909	\$325,643	\$268,917
Total Expenses	\$72,735,275	\$74,367,692	\$69,952,104	\$70,266,030	\$67,309,472

10 Development

Gift Revenue Dollars

		FY2014-15	FY2015-16	FY2016-17	FY2017-18	FY2018-19
Endowment gifts	University Total	\$132,700	\$59,492	\$8,763	\$6,420	\$8,970
	Central	6,000	4,800			
	GSLC					
	Los Angeles		1,000	50		
	Midwest		1,000		50	305
	New England	106,700	30,192	8,663	6,195	8,565
	Santa Barbara		1,000			
	Seattle	20,000	21,500	50	175	100
Scholarship gifts	University Total	637,656	555,791	414,800	268,714	139,537
	Central	1,350		23,417	30,839	26,974
	GSLC	150,683	63,020	20,779	22,966	65,536
	Los Angeles	14,915	253,453	317,866	179,647	22,148
	Midwest	16,495	3,891	2,531	1,725	2,104
	New England	46,470	18,574	34,664	17,937	13,825
	Santa Barbara	357,087	190,045	3,503	3,685	350
	Seattle	50,656	26,808	12,041	11,915	8,600
Other restricted gifts	University Total	597,448	575,081	2,598,577	641,639	1,429,318
	Central		21,269	2,197,663	90,232	41,706
	GSLC			3,700	50	10,545
	Los Angeles	161,985	205,458	201,840	267,265	100,904
	Midwest	1,075	3,325	1,775	607	50
	New England	182,713	211,292	144,401	77,100	1,255,538
	Santa Barbara	249,500	123,450	7,400	195,931	20,020
	Seattle	2,175	10,289	41,798	10,455	555
Unrestricted gifts	University Total	227,811	351,076	198,212	158,759	213,090
	Central	86,170	214,336	71,358	139,939	172,826
	GSLC				535	350
	Los Angeles	34,240	8,350		3,250	625
	Midwest	25,825	7,552	1,600	2,550	790
	New England	71,215	45,633	21,781	11,335	36,430
	Santa Barbara	2,350	68,260	701	750	200
	Seattle	8,011	6,945	102,772	400	1,870
Gifts-in-Kind*	University Total	10,138	20,707	5,620	4,378	100
	Central			1,270		
	Los Angeles	638	8,199	100	1,300	
	Midwest		805	500		
	New England	2,586	3,138	1,850	1,300	100
	Santa Barbara	6,863	75	1,900	600	

	Seattle	50	8,490		1,178	
Grants and Contracts	University Total	2,284,988	1,891,339	2,778,746	2,285,591	1,203,032
	Central					
	GSLC					
	Los Angeles	56,000	105,000		40,000	50,000
	Midwest	1,500	17,500	84,980	10,000	
	New England	285,378	1,678,251	2,627,678	1,915,458	683,782
	Santa Barbara	1,924,110	28,500	30,700	20,250	51,250
	Seattle	18,000	62,088	35,388	299,883	418,000

*The estimated value for these donations has been provided by the donor.